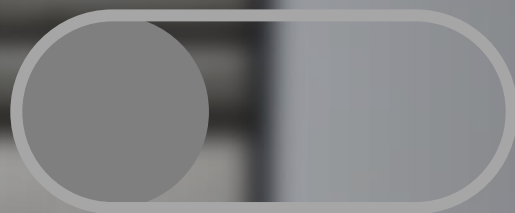
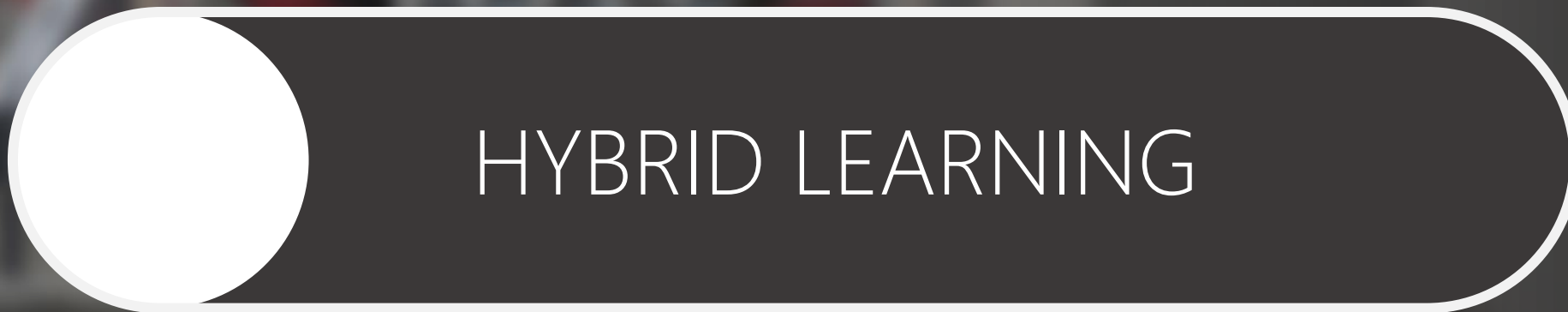




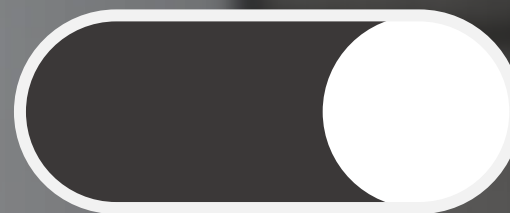
TRANSFORMATION, LEADERSHIP AND INNOVATION IN EDUCATION

Kati Tiainen, Senior Director K12, EMEA, Microsoft Education





OFF



ON



CLASSROOM TECHNOLOGY



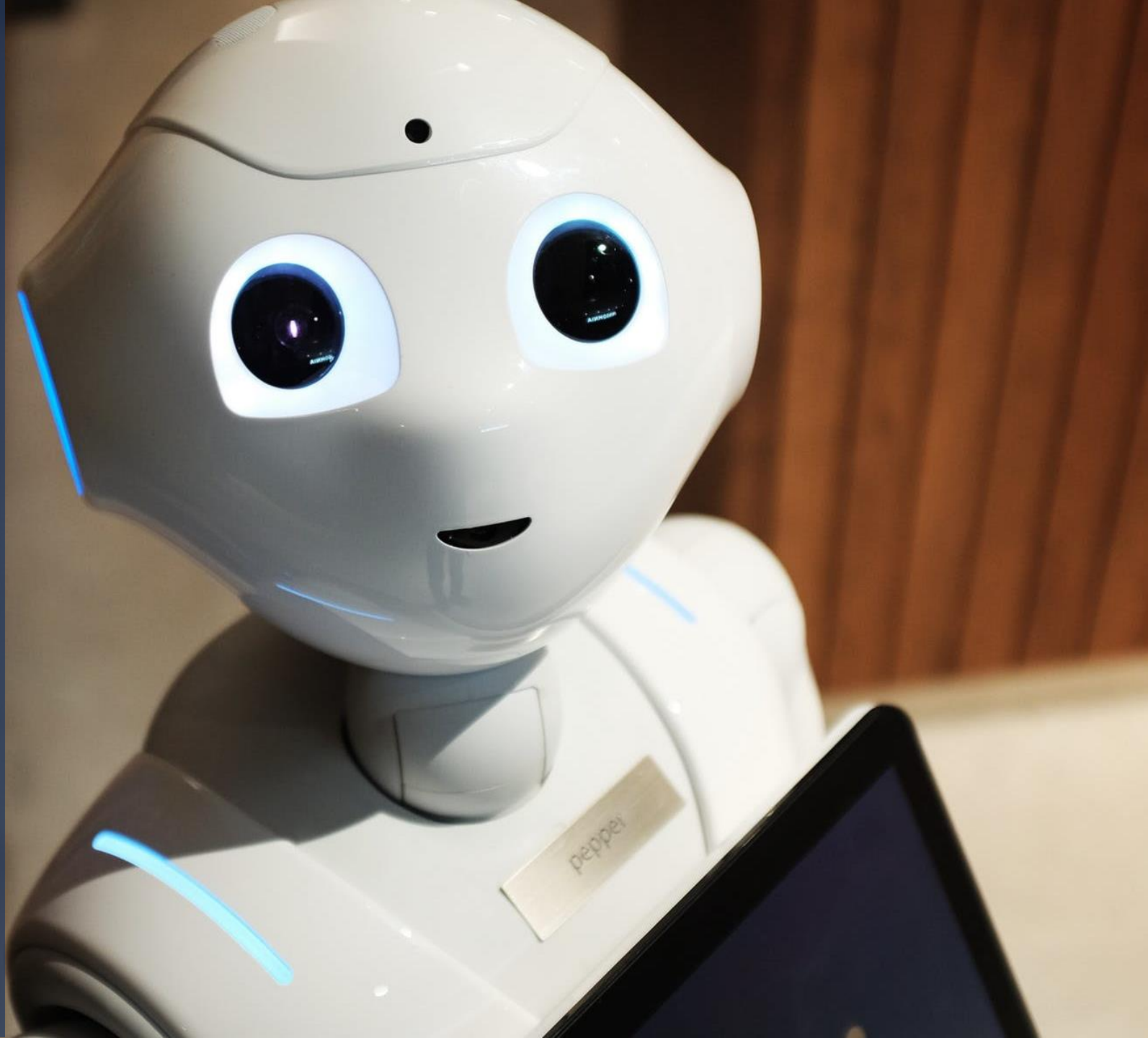
INFRASTRUCTURE
OPTIMIZATION



LEARNING BEYOND THE
CLASSROOM

The Fourth Industrial Revolution (Today)

Fusion of technologies blurs lines between physical, digital and biological sectors. Augmented reality, collaborative robots, precision medicine.





The Engines of our Future



ARTIFICIAL
INTELLIGENCE



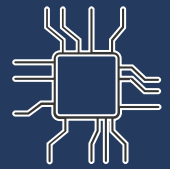
INTERNET
OF THINGS



MIXED
REALITY



BLOCKCHAIN



QUANTUM
COMPUTING

Microsoft Education Transformation Framework



Why use a framework?

Feedback from system leaders

- Holistic approach
- 360-degree view for transformation
- Bring all stakeholders to the table
- Support resource and planning alignment
- Get a clear transformation roadmap
- Learn from others' mistakes



About the ETF



Holistic approach

The education of the whole child requires a complex integration of numerous functions of a school system. Successful transformations are holistic and systemic.



Global best practice

Examples of what works and what doesn't from education institutions around the world to identify those strategies that are the most impactful.



Grounded in research

Research from policy makers and academics where learning transformation initiatives have made dramatic improvements.

Education Transformation Framework

The Microsoft Education Transformation Framework is a guide for education leaders to navigate the complexity of transformation impacting every aspect of their mission. It facilitates the process of envisioning what's possible and developing a strategy to achieve it.





Leadership & Policy

Collaboratively envisioning and creating an intentional culture of innovation and learning, with shared goals that engage the community and motivate leaders, educators, and all stakeholders to plan and lead change.



Vision for Change

Build a shared, inclusive vision representing the aspirations of students, teachers, leaders, and the community with the flexibility for ongoing revisions to address continual change.



Strategic Planning & Change Management

Develop strategic implementation plans and identify strategies and processes to support stakeholder groups through the transition.



Continuous Improvement & Culture

Continuously monitor progress and measure results while fostering a culture of organic growth, improvement, collaboration, and innovation.



Community Engagement & Partnerships

Enable effective transformation through community engagement and a coalition of partners with complementary competencies and knowledge.



Reflection

- Do you have a current education vision in place? What does it look like today and how can it be improved? How is post Covid-19 new normal impacting it? What is the vision for new normal?
- To what extent does your organization incorporate opinions, feedback and needs from your educators, leaders, and parents into the overall vision, strategy, and plans?
- Does your organization support a learning & innovation culture where continuous improvement and growth for leaders, teachers, and staff is a priority?
- Who are your strategic partners and how do you leverage their support?



Teaching & Learning

Helping all students achieve their potential by taking a student-centered approach to explore all aspects of teaching and learning: curriculum, assessment, devices, and spaces with a focus on understanding and meeting the needs of all students.



Student-Centered Learning

Create a pedagogy inclusive of teaching and learning practices that are project and competency-based, collaborative, and require students to own their learning.



Curriculum & Assessment

New forms of curriculum – whether project-based, personalized or competency driven – require new tools to access, customize and assess progress for each student.



Devices for Learning

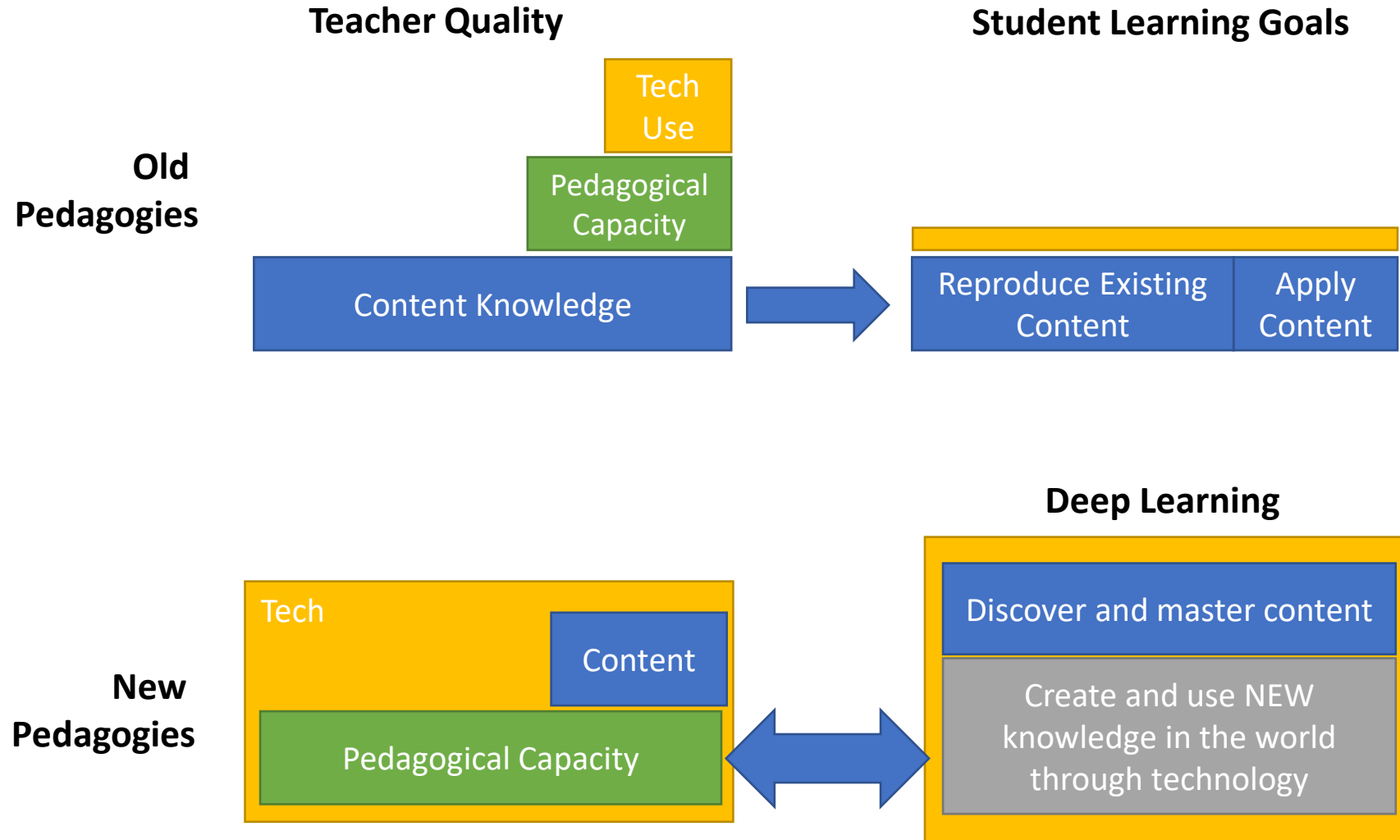
Offer students multi-modal learning through voice, touch, and digital ink and increase their ability to retain information, generate new ideas, and use real-world software.



Learning Spaces

Align spatial design with learning goals, so lesson plans drive the classroom setup, instead of the other way around and physical learning spaces are more flexible, collaborative, equitable, healthy, and inspiring.

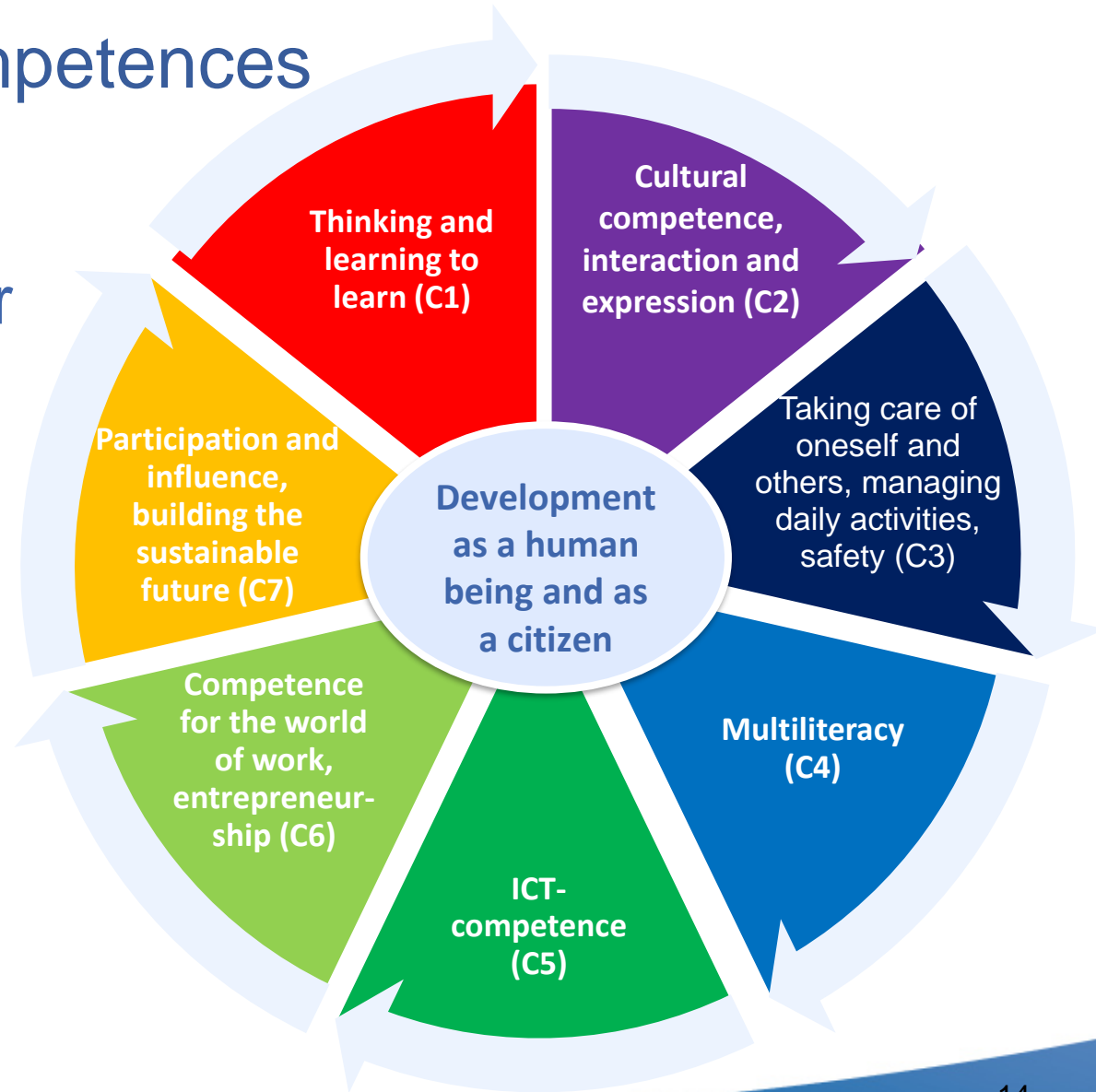
How the new pedagogies are different





Rethinking competences

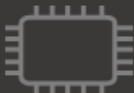
National goals for basic education



THE DEVICE DOESN'T MATTER UNTIL YOU CHOOSE THE WRONG ONE



New Chassis



Latest
Generation
Processor



Good to Go
indicator



Screen
Size



MIL-STD-
810G



Spill
Proof



All Day
Battery



Touch &
Ink



Pen
Garaged





Reflection

- What steps have you taken to embrace a pedagogy that empowers students to own their learning?
- How is your process to keep the curriculum engaging and use assessment to inform instruction?
- How do you ensure students have access to the best devices for learning and what policies are in place to optimize their usage?
- What considerations are being made on how to improve physical learning spaces such as libraries, classrooms, and meeting facilities?



Intelligent Environments

Developing safe and secure onsite and online environments and leveraging data analytics to optimize student outcomes and to create efficient, responsive, and sustainable processes and allocation of resources.



Hybrid Learning

Enable learning in physical, digital and hybrid realms, seamlessly spanning formal and informal learning contexts across time, location, and learning media.



Safety, Security, & Privacy

Ensure the safety of students, faculty, and staff using the latest security monitoring, communications, notification, and emergency response systems and technologies.



Optimized & Sustainable Operations

Optimize and increase the efficiency of the daily operation of schools, including administration, logistics, and IT to increase productivity and reduce cost.



Advanced Analytics & AI

Use Integrated data with advanced analytics for system improvements and visibility into teaching, learning, and administration progress within and across classrooms and schools.



**LEARNING IN
ISOLATION?**



LEARNING TOGETHER



Intelligent Environments

Developing safe and secure onsite and online environments and leveraging data analytics to optimize student outcomes and to create efficient, responsive, and sustainable processes and allocation of resources.



Hybrid Learning

Enable learning in physical, digital and hybrid realms, seamlessly spanning formal and informal learning contexts across time, location, and learning media.



Safety, Security, & Privacy

Ensure the safety of students, faculty, and staff using the latest security monitoring, communications, notification, and emergency response systems and technologies.



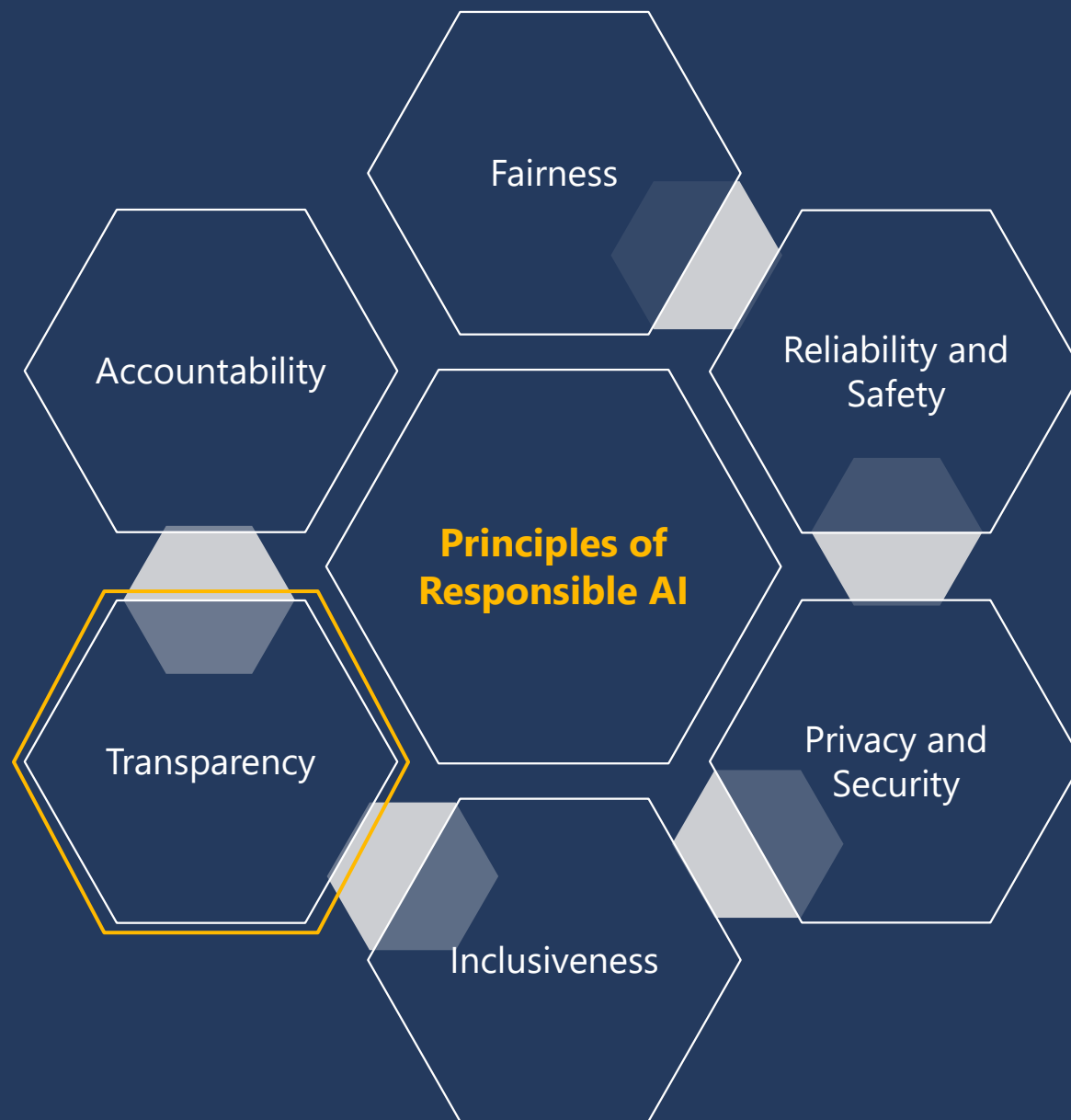
Optimized & Sustainable Operations

Optimize and increase the efficiency of the daily operation of schools, including administration, logistics, and IT to increase productivity and reduce cost.



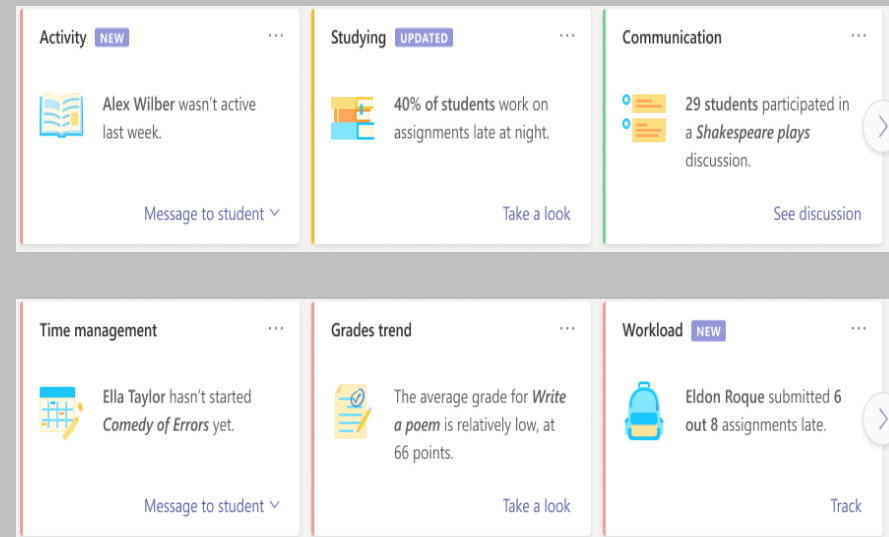
Advanced Analytics & AI

Use Integrated data with advanced analytics for system improvements and visibility into teaching, learning, and administration progress within and across classrooms and schools.



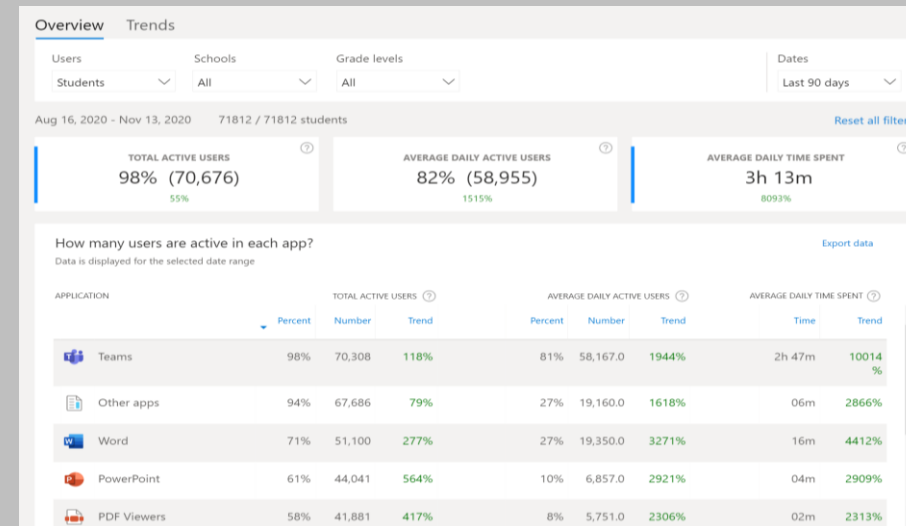
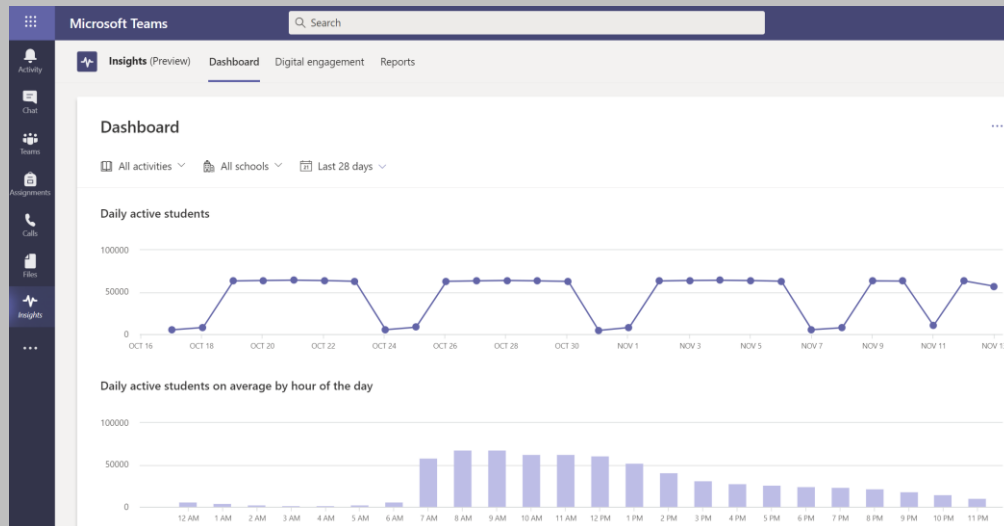
Class Insights for educators

Enables teachers to understand what's happening and which class needs their attention



Insights for Schools and System Leaders

Enables leaders to understand the system level data



Open Education Analytics Community

enabling many
types of
education data...



...to be used for
many different
scenarios

Building A Global OEA Partner Ecosystem



Reflection

- What kind of systems are in place to support various hybrid learning models?
- What measures and process are in place to ensure a safe and secure physical and digital environment for teachers and students?
- How can education institutions optimize the use of limited resources to increase the efficiency of all school operations?
- How do you collect and analyze data to make informed decisions



Student & School Success

Anchored in equity and inclusion, building capacity through professional learning and development for all to ensure students develop their social and emotional skills and are successfully prepared for the future.



Educator, Leader, & IT Development

Build collaborative capacity for educators, staff, IT, and leaders as part of a learning community working to continuously improve teaching and learning.



Future-Ready Skills

Empower students with the digital and productivity skills they need to be successful and active participants in the community for employment and entrepreneurship.



Social Emotional Learning

Develop students' ability to manage emotions, set and achieve goals, feel, and show empathy for others, establish, and maintain positive relationships, and make responsible decisions.



Equity, Inclusion, & Accessibility

Provide accessible technology that can meet the needs of all students looking to take greater responsibility for their learning and development of technology skills.



Search or type a command



Activity



Chat



Teams



Assignments



Files



Apps



Help

< All teams



Science 1a



General

Unit 1

Unit 2



General

Posts

Files

Class Notebook

Assignments

Grades



Channel

Confidential



Thank you William!



Christie Cline

Yesterday at 8:23am

These are both really helpful!

Reply



Reflect Just now

Created by Cara Coleman Public – Names displayed on reflections

How did you feel about this week?



Reflect Just now

Reflections for "How did you feel about this week?"



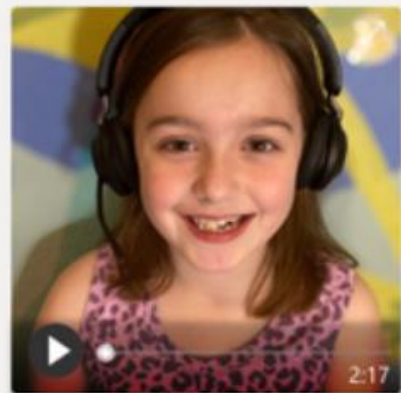
7 10 4 3 2

View reflections

Reply

Start a new conversation, use @ to mention someone





 Low

Insights

Correct Words per Minute ⓘ

Accuracy Rate ①

2 Omissions

1 Self-corrections

1 Insertions

Repetitions

Fresh water sources also influence where people settle. People need water

Omission

Insertion

Mispronunciation

Repetition

Self-correction

Mark as correct

[Jump to word](#)

Close

Student work

Turned in Oct 14th at 9:51pm [View history](#)

Geography of the Earth

Feedback

Enter feedback for this assignment
(max. 1000 characters)

Return



Reflection

- What programs or opportunities are in place to support the ongoing capacity building of educators, leaders and staff?
- How are students' future-ready skills being developed? And how integrated are those skills into the curriculum?
- What practices and programs are in place to develop students' self-awareness, self-management, social awareness, relationship building and responsible decision-making?
- How do you ensure the learning needs of all students irrespective of background and ability are being met?

**License
to lead!**



THANK YOU!